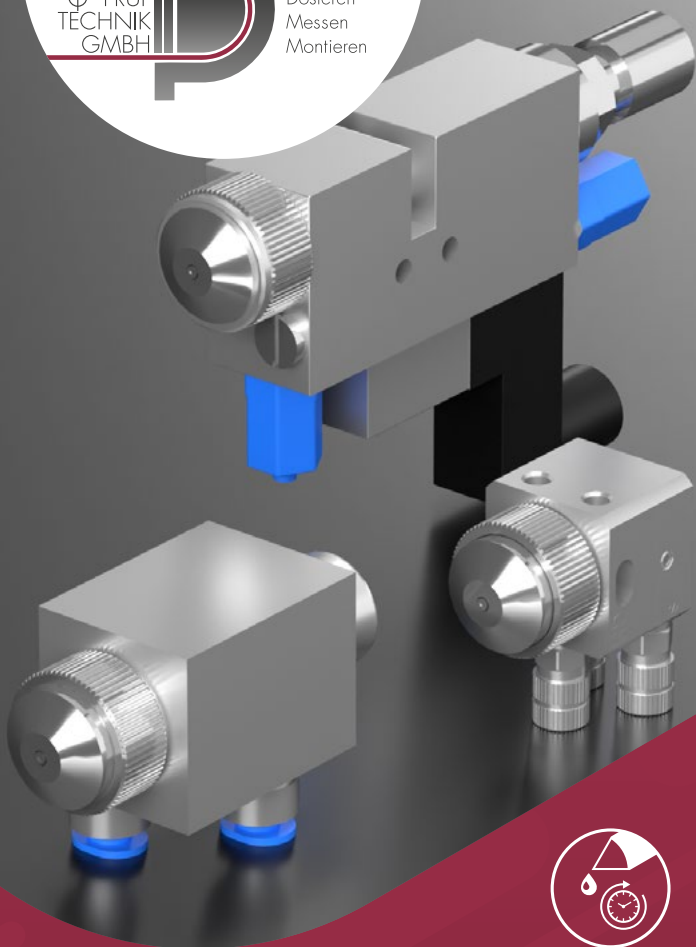


DOSIER
PRÜF
TECHNIK
GMBH



Automatisieren
Dosieren
Messen
Montieren



TIME-CONTROLLED DOSING SPRAY VALVES

Comprehensive material application –
precise, contactless, flexible

www.dptechnik.com

CONTACTLESS SURFACE APPLICATION FOR COMPLEX CONTOURS

In modern production processes, media such as release agents, oils, or adhesives often need to be applied quickly, precisely, and with repeat accuracy over **large areas** – often on sensitive or geometrically complex surfaces.

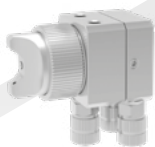
The material must be applied as finely as necessary and as **evenly** as possible. In addition, **minimal amounts of grease**, defined **lubricating films** or the targeted application of media into **complex component geometries** such as undercuts are required.

D+P spray valves enable **finely controllable, air-assisted material application** – pulsating or continuous.

The spray pattern can be precisely adjusted using **air caps** and **nozzles**, while short internal air paths enable **precise cycling**. The **compact design** facilitates integration even where space is limited.

Various control concepts and additional functions such as **blow-off control** or **needle monitoring** allow the valves to be optimally adapted to the respective process.

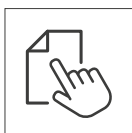
PRODUCT RANGE



SVKA

Particularly compact version for simple applications with limited installation space.

Basic functions for precise material application in robot cells and narrow assembly lines.



Data sheet

- ▶ Compact and lightweight
 - ▶ For simple applications with limited space
-



SVSV

Flexible adjustment options for air and material.

Ideal for processes with variable spray patterns and high demands on media guidance.



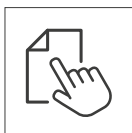
Data sheet

- ▶ Separate air control
 - ▶ Sealing system with controlled leakage guidance
-



SVEP

Fully integrated spray valve with electromagnetic control. Short switching times, automatic nozzle cleaning, and optional process monitoring.

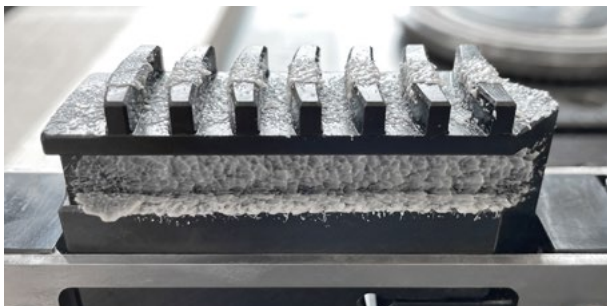


Data sheet

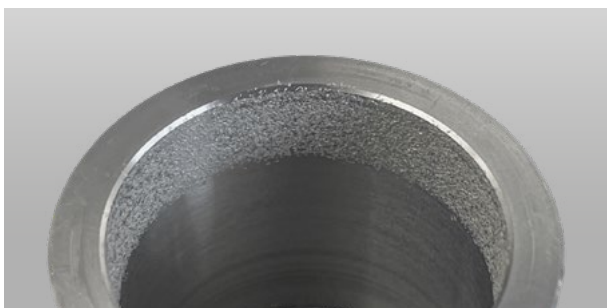
- ▶ Electropneumatically controlled
- ▶ With blow-off function and needle detection (optional)

PRACTICAL EXAMPLES

A selection of greasing results:



Greasing scroll chucks

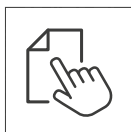


Greasing bearing seat

MORE INFORMATION

PRODUCT CATALOG

You can find our extensive range of dosing technology here:



YOUR ADVANTAGES



CONTACTLESS SURFACE APPLICATION

Air-assisted spraying of media without mechanical contact with the component surface.



PULSATING OR CONTINUOUS

Flexible operating modes for cyclical or continuous dosing processes.



PRECISE DOSING QUANTITIES

Finely adjustable material feed for reproducible lubricating films and minimal application quantities.



VARIABLE SPRAY PATTERN

Can be adapted to component geometry and media type by changing air caps and nozzles.



SHORT RESPONSE TIMES

Fast valve switching times thanks to optimized air paths for precise pulse control.



SPACE-SAVING DESIGNS

Compact and lightweight construction for easy integration even in limited installation space.



EXPANDABLE FUNCTIONALITY

Optional blow-out function, needle detection or external control available depending on valve type.

CONTACT US NOW!

From individual dosing components to complex dosing systems and units - our team will be happy to support you with individual advice and find exactly the right solution for you!

☎ +49 9081 27593 0

✉ info@dptechnik.de



EXACTLY YOUR SOLUTION!

D+P,
Dosier- u. Prüftechnik GmbH
Emil-Eigner-Straße 3
D-86720 Nördlingen



www.dptechnik.com